

## LABELING SOLUTIONS

# Iconex® Linerless Beverage

## Manage customized beverage orders with ease

Iconex linerless beverage labels simplify management of made-to-order beverages with the ability to apply customer orders directly to the cup.



### Custom Orders

Double shot iced latte, non-fat whip and extra chocolate for Kimberly. Iconex linerless labels keep customized orders personal with renewed focus on order quality to keep the customer coming back.



### Mobile and Online To-Go Orders

Innovations in order placement require innovations in order fulfillment. Iconex and POS printer OEMs offer integrated kitchen alerts and the ability to queue orders to assist with order management.



### Expansive Options and Seasonal Menus

Take the menu learning curve out of the service equation. Iconex linerless labels and POS technology enable you to instantly adopt the latest menu adaptations and guide the made-to-order process.

### Product Features

- Integrated receipt and label
- Eliminates landfill waste
- 40mm width
- Wide application and performance
- Prop 65 compliant
- Functions with Epson, Transact, Bixolon, and Toshiba POS printers

### Ultra-Lite

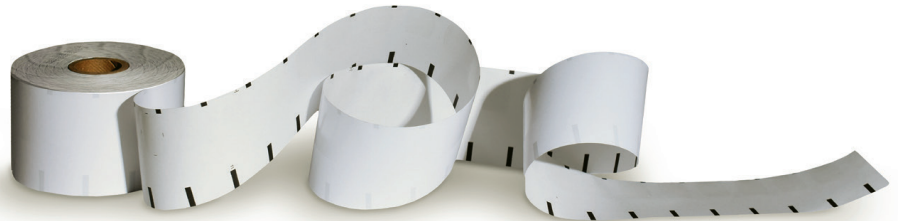
Lightweight paper with sense marks

### Full-Tack

Completely adheres to container

### PlusD

Eco-friendly with high tack adhesion



Iconex is the world's leading provider of innovative label solutions that create value for our customers by improving operational efficiency. Our highly differentiated label solutions target specific markets and solve business process problems by utilizing our extensive R&D resources, patent portfolio, and best-in-class manufacturing. Building upon our unique tradition of innovation, we anticipate trends, develop timely solutions, and help solve business challenges. This information is subject to change without notice. All brand and product names are trademarks, registered trademarks, or service marks of their respective holders. © 2024 Iconex.



For more information about Iconex innovative labeling solutions, please visit [www.iconex.com](http://www.iconex.com)